

CORPORATE OFFICER

REFERENCE PLAN TO ACCOMPANY BYLAW NO 7864-2022
TO CLOSE PARTS OF ROAD DEDICATED ON PLAN 66748
ALL OF SECTION 10 TOWNSHIP 12
NEW WESTMINSTER DISTRICT
PURSUANT TO SECTION 120 OF THE LAND TITLE ACT
AND SECTION 40 OF THE COMMUNITY CHARTER
BCGS 92G.028

Plan EPP122381

SCHEDULE 1



The intended plot size of this plan is 565 mm in width by 854 mm in height
(D 333) when plotted at a scale of 1:500

This Plan Lies Within Integrated Survey Area No. 36, Maple Ridge, RAD3 (CSRS), 4.0 G.B.C. 1.0/0.0

Old bearings are derived from measurements between
geodetic control monuments 8891367 and 8891368 and
are referred to the central meridian of UTM Zone 10.

The UTM coordinates and estimated absolute accuracy achieved
are derived from the 84/02/07 published coordinates and standard deviations
for geodetic control monuments 8891367 and 8891368.

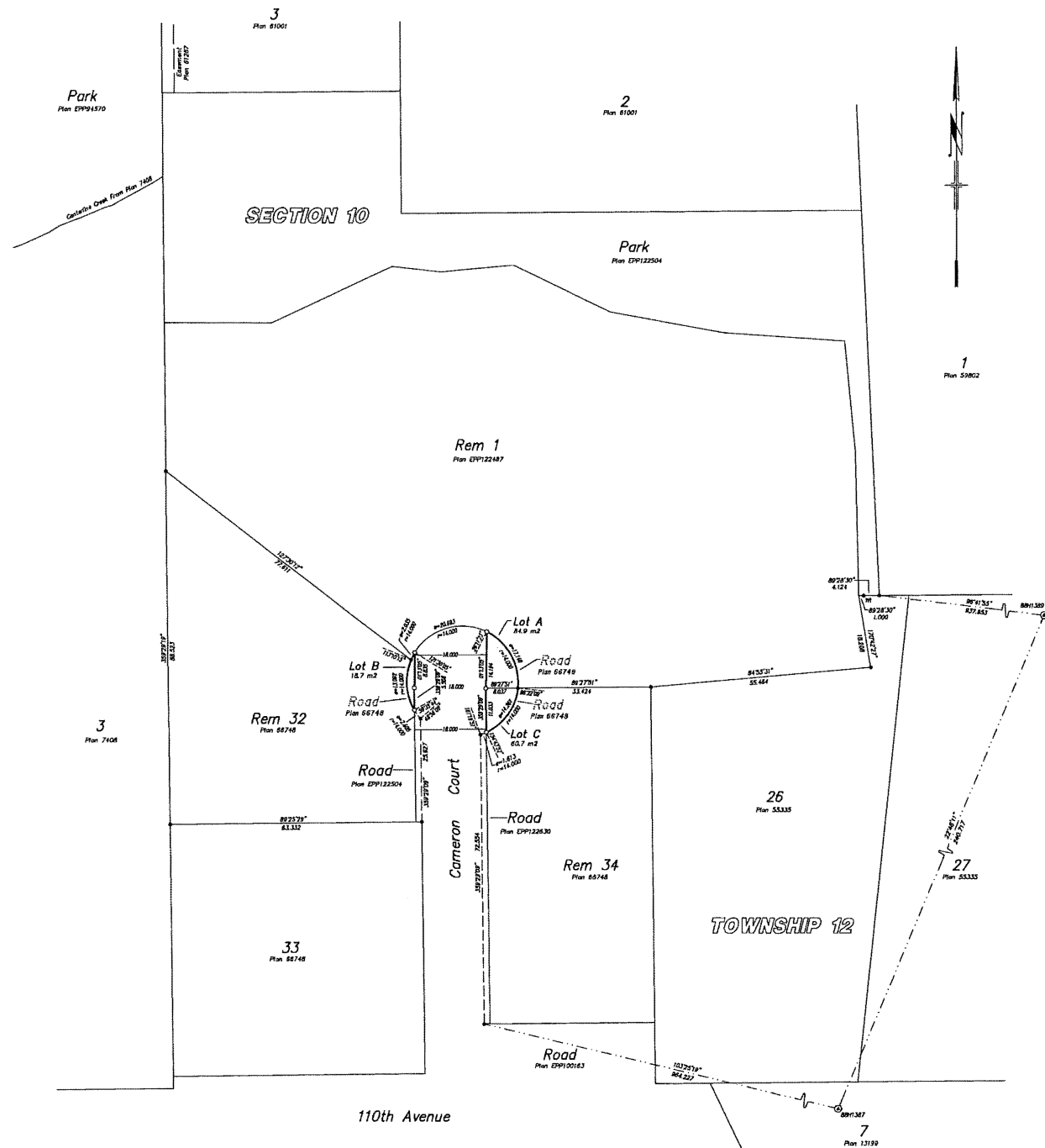
This plan shows horizontal ground-level distances unless otherwise specified.
To compute grid distances, multiply ground-level distances by the average
combined factor of 0.99996026. The average combined factor has been determined
based on geodetic control monument 8891368.

LEGEND:

All Distances Are in Metres And Decimals Thereof

- ⊙ Control Monument Found
- Standard Iron Post Found
- Standard Iron Post Set

Note: This plan shows one or more witness posts
which are not set on the true corner(s).



This plan lies within the Metro
Vancouver Regional District.

The field survey represented by this plan was
completed on the 12th day of July, 2022
Attn: Surveyors, B.C.S. 793

CONTROL MONUMENT	NORTHING	EASTING	ESTIMATED ABSOLUTE ACCURACY	COMBINED FACTOR
8891367	5450045.618	534211.370	4.0 G.B.C.	0.99996026
8891368	5448823.803	534118.114	4.0 G.B.C.	0.99996025